

PCCHA APPROVED EVENTS FOR 2008

For the most current PCCHA approved events, please visit www.pccha.com

MCARTHUR CUTTING

Event Dates AUGUST 8-9-10, 2008
 Event Name 17TH ANNUAL MCARTHUR CUTTING HORSE SHOW
 Event Location McArthur Ca
 Approvals NCHA-PCCHA
 Judges Pending
 APPROVED CLASSES PURSE ENTRY FEE CATTLE CHARGE OFFICE CHARGE
OPEN \$499 \$140.00 \$140.00
NON PRO \$499 \$140.00 \$140.00
\$50,000 AMATEUR \$499 \$140.00 \$140.00
\$20,000 NON PRO JP \$70.00 \$70.00
\$10,000 AMATEUR JP \$70.00 \$70.00
\$2,000 LIMIT RIDER JP \$60.00 \$70.00
\$10,000 NOVICE \$499 \$140.00 \$140.00
\$3,000 NOVICE \$499 \$140.00 \$140.00
\$10,000 NOVICE NP \$499 \$140.00 \$140.00
\$3,000 NOVICE NP \$499 \$140.00 \$140.00
JR YOUTH(Sat/Sun) JP \$20.00 \$25.00
SR YOUTH(Sat/Sun) JP \$20.00 \$25.00
 \$1,500 Novice JP \$40.00 \$80.00

UNAPPROVED CLASSES PURSE ENTRY FEE CATTLE CHARGE OFFICE CHARGE
 Futurity Open \$499.00 \$140 \$140
 Friday And Sunday, Derby Open - Saturday
 Futurity Non Pro \$300 \$110 \$110
 Saturday And Sunday Derby Non Pro - Saturday
 Youth Never Won A Buckle (Saturday) \$50
 Never Won A Buckle (Friday) \$50

ADDITIONAL INFO:
 PRACTICE DAY ON AUGUST 7 Entries close day of show; Horses on grounds at 6:00 am; Show starts at 7:00am. Show manager: Christine and George McArthur, Show Secretary: Lindsey Mills: P.O. Box 2730 Chino Valley, AZ., 86323. Phone: (928) 636-0695; For Class Schedule and lodging information in the McArthur California area, go to www.lindseymills.com. Additional fees include: Video: \$5; NCHA World- \$2; PCCHA- \$6; Office-\$5; drug-\$5. Two Practice pens. RV space on grounds - reserve by calling 530-336-5695; Stalls: \$130.00. Please reserve by July 28, 2008. Stalls and stall location reserved after July 28, 2008 subject to availability.

KERN COUNTY CUTTING HORSE ASSOCIATION

NAME OF SHOW Kern County Cutting Horse Association
 DATE(S) 8/16/2008
 LOCATION Sundance Feedyard, Bakersfield, CA
 APPROVALS KCCHA, PCCHA, NCHA
 JUDGES pending
 APPROVED CLASSES PURSE ENTRY FEE CATTLE CHARGE OFFICE CHARGE
OPEN \$500 \$110 \$90 \$80
NON PRO 500 110 90 80
\$50,000 AMATEUR 500 110 90 80
\$10,000 AMATEUR JP 60 75 30 30
\$10,000 NOVICE 500 110 90 80
\$10,000 NOVICE NP 300 90 75 75
\$3,000 NOVICE 300 90 75 75
\$3,000 NOVICE NP 300 90 75 75
\$20,000 NON PRO JP 60 75 30 30
\$2,000 LIMIT RIDER JP 60 75 30 30
SENIOR YOUTH JP 20 75 5 5
JUNIOR YOUTH JP 20 75 5 5
 UNAPPROVED CLASSES PURSE ENTRY FEE CATTLE CHARGE OFFICE CHARGE
 750 limit rider JP \$35 \$75 \$15
 1500 novice JP 40 75 45 45
 Ranch JP 75 10 10
 3 Yr Old Open \$500 110 90 80
 3 Yr old NP \$300 90 75 75
 4 Yr Old Open \$500 110 90 80
 4 Yrd Old NP \$300 90 75 75
 Open Gelding JP 40 75 45 45
 ENTRIES CLOSE Day of Show SHOW BEGINS 8:00
ADDITIONAL FEES video
 SECRETARY'S NAME Toni Ott
 ADDRESS 8919 E. Wilson Bakersfield, CA 93308
 PHONE 661-366-5110
 ADDITIONAL INFORMATION Peggy Biller 559-779-2809

KERN COUNTY CUTTING HORSE ASSOCIATION

NAME OF SHOW Kern County Cutting Horse Association
 DATE(S) 9/12,13,14/2008
 LOCATION Sundance Feedyard, Bakersfield, CA
 APPROVALS KCCHA, PCCHA, NCHA
 JUDGES pending
 APPROVED CLASSES PURSE ENTRY FEE CATTLE CHARGE OFFICE CHARGE
OPEN \$500 \$110 \$90 \$80
NON PRO 500 110 90 80
\$50,000 AMATEUR 500 110 90 80
\$10,000 AMATEUR JP 60 75 30 30
\$10,000 NOVICE 500 110 90 80
\$10,000 NOVICE NP 300 90 75 75
\$3,000 NOVICE 300 90 75 75
\$3,000 NOVICE NP 300 90 75 75
\$20,000 NON PRO JP 60 75 30 30
\$2,000 LIMIT RIDER JP 60 75 30 30
SENIOR YOUTH
SAT. & SUN. JP 20 75 5 5
JUNIOR YOUTH
SAT. & SUN JP 20 75 5 5

UNAPPROVED CLASSES PURSE ENTRY FEE CATTLE CHARGE OFFICE CHARGE
 750 limit rider
 Sat. only JP \$35 \$75 \$15
 1500 novice JP 40 75 45 45
 Ranch JP 75 10 10
 Sat. only
 Open Futurity \$500 110 90 80
 Fri. & Sat.
 Open Derby 500 110 90 80
 Fri. & Sat.
 Futurity Non-Pro 300 90 75 75
 Sun. only
 Derby Non-Pro 300 90 75 75
 Sun. only
 Open Gelding JP 40 75 45 45
 Sat. only
FRESH CATTLE IN ALL CLASSES-ALL 3 DAYS!!
ENTRIES CLOSE Day of Show SHOW BEGINS 8:00
ADDITIONAL FEES Video, pccha, Turnback, drug & world fees
STALLS \$125.00 please reserve by 9/2/08, \$135.00 after
HOTEL INFORMATION Holiday Inn Express 661- 833-3000
SECRETARY'S NAME Toni Ott
ADDRESS 8919 E. Wilson Bakersfield, CA 93308
PHONE 661-366-5110
E-MAIL / WEBSITE pbiller@aol.com / www.KCCHAcutting.org
FX NUMBER 559-686-3501
ADDITIONAL INFORMATION Peggy Biller 559-779-2809

SOUTH POINT FUTURITY OPEN CUTTING

NAME OF SHOW South Point Futurity Open Cutting
 DATE(S) October 10 & 11, 2008
 LOCATION South Point Equestrian Center, Las Vegas, Nevada
 APPROVALS NCHA, PCCHA
 JUDGES TBA
 APPROVED CLASSES PURSE ENTRY FEE CATTLE CHARGE OFFICE CHARGE
OPEN 750 180 180 25
NON PRO 750 180 180 25
\$50,000 AMATEUR 750 180 180 25
\$10,000 NOVICE 750 180 180 25
\$3,000 NOVICE 750 180 180 25
10,000 Nov NP 750 180 180 25
3,000 Nov NP 750 180 180 25
20,000 NP JP 75 75 25 25
10,000 AMATEUR JP 75 75 25 25
2,000 RIDER JP 75 75 25 25
Jr/JrSr YOUTH JP 25 20 15 15
 (SAT ONLY)

ENTRIES CLOSE 10/1 Late fee per entry \$25 after 10/1
 SHOW BEGINS 8 a.m.
ADDITIONAL FEES \$5 video, \$6 PCCHA approval fee
STALLS \$100 for open show. \$130 for entire event.
 Contact Colleen Holt at 817-234-5720 or fax 817-596-3672.
HOTEL INFORMATION South Point Hotel, Casino & Spa 1-866-791-7626
SECRETARY'S NAME Kathryn Webb
ADDRESS 7493 N. 9150 W., Lehi, UT 84043
PHONE 801-768-0866
E-MAIL / WEBSITE kwebb50@msn.com
FAX NUMBER 801-768-2296
ADDITIONAL INFORMATION Youth Scholarship cutting - \$500 scholarship to champion. Held in conjunction with South Point Futurity. For entry forms, stall information, contact Colleen Holt at 817-234-5720 or fax 817-596-3672.

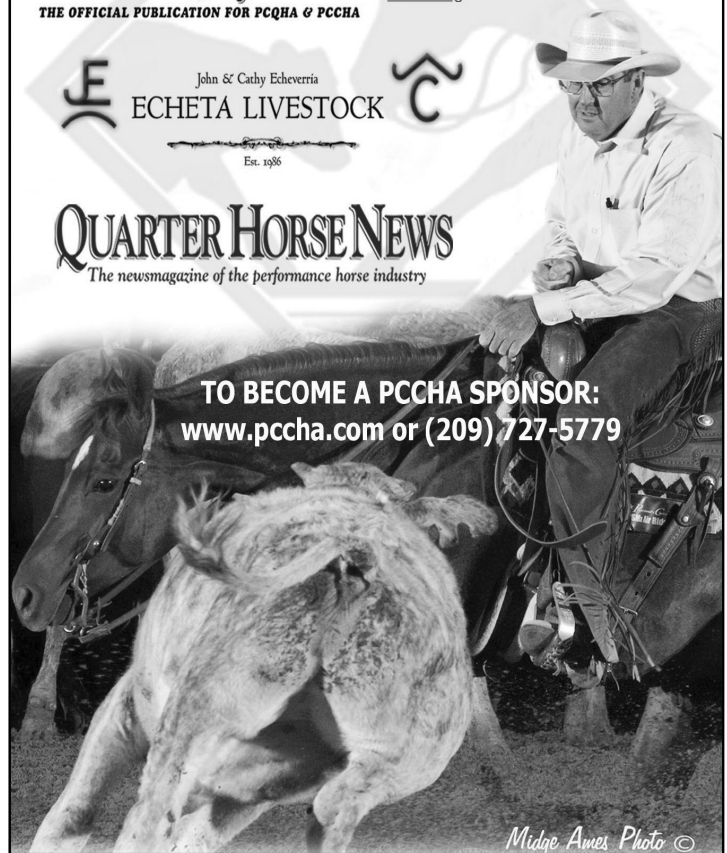
AZCHA OCTOBERFEST REVISED AGED EVENT - NO AGED EVENT CLASSES

NAME OF SHOW AZCHA SUN CIRCUIT SHOW
 DATE(S) October 16-17-18-19, 2008
 LOCATION BUCKEYE AZ - EMPTY ACRES
 APPROVALS NCHA-PCCHA
 APPROVED CLASSES PURSE ENTRY FEE CATTLE CHARGE OFFICE CHARGE
OPEN \$500 140 \$140 \$6/5/2
NON PRO \$500 140 \$140 \$6/5/2
\$50,000 AMATEUR \$500 \$140 \$140 \$6/5/2
\$10,000 AMATEUR JP \$70 \$70 \$10/6/5/2
\$10,000 NOVICE \$500 \$140 \$140 \$6/5/2
\$10,000 NOVICE NP \$500 \$140 \$140 \$6/5/2
\$3,000 NOVICE \$500 \$140 \$140 \$6/5/2
\$3,000 NOVICE NP \$500 \$140 \$140 \$6/5/2
\$20,000 NON PRO JP \$70 \$70 \$10/6/5/2
\$2,000 LIMIT RIDER JP \$70 \$70 \$10/6/5/2
Sr Youth (Sat/Sun) JP \$25 \$35 \$6/5/2
Jr Youth (Sat/Sun) JP \$25 \$35 \$6/5/2
 UNAPPROVED CLASSES PURSE ENTRY FEE CATTLE CHARGE OFFICE CHARGE
DERBY OPEN \$500 \$140 \$140
 (Thurs and Fri)
DERBY NP \$200 \$110 \$110
 (Sat and Sun)
\$1,500 Novice JP \$50 \$80 \$5
\$500 Rider JP \$25 \$35 \$5
5/6 OPEN \$300 \$120 \$120
 (Thurs and Fri)

PCCHA'S CORPORATE SPONSORS ARE KEY TO THE CONTINUED SUCCESS OF CUTTING ON THE PACIFIC COAST. PLEASE SUPPORT OUR SPONSORS THE WAY THEY HAVE SUPPORTED US.



TO BECOME A PCCHA SPONSOR:
www.pccha.com or (209) 727-5779



Midge Ames Photo ©